

Comparison table of Quick Splasher and fire extinguisher

	ABC powder extinguisher	Mechanical foam fire extinguisher	Quick Splasher
Weight of extinguishing agent	3kg	3L	2.5L
Purpose	【To extinguish a fire】 To make a fire stop burning.	【To extinguish a fire】 To make a fire stop burning.	【Suppress fire against arson and oil spill.】 Prevent ignition and combustion expansion from unintentional explosions.
Discharge time	15~25 seconds	30~50 seconds	about 1.8 seconds
Discharge characteristics	Aim at the base of the fire.	Aim at the base of the fire.	Instantly discharge over a wide area.
Effective range (ex)	Class B Fires : Effective range : 1.4m ²	Class B Fires : Effective range : 1.2m ²	Ignition suppression and combustion suppression in the range of about 10m ² .
The sustainable suppression effects	No sustainable suppression effect.	Few sustainable suppression effect.	Suppression effect lasts for 15 minutes or more.

Oil recovery examples



Current Issue Table of Contents updated May, 2021.
Product specifications and appearance are subject to change without notice due to technical improvement.

NDC Nippon Dry-Chemical

〒114-0014 6-1-1 Tabata, Kita-ku, Tokyo
TEL : 03-5815-5026 FAX : 03-3822-9771
<https://www.ndc-group.co.jp/english/index.html>

Contact us:

Quick splasher

New
Product in Japan

Int'l PAT.P

Discharging distance

Name	Quick splasher
Agent	2.5L
Weight	approx.5kg
Height	approx.518mm
Diameter	φ123mm
Discharging distance	maximum10m ²
Discharge time	approx.1.8 seconds
Temperature range	0 ~ +40℃

※If the protected area exceeds 10 m², add the quantity every 10 m².
※If it exceeds the operating temperature range, it may not be effective even if it is used.

Reducing the chance of Arson Attacks

Utilizing our accumulated technological capabilities, if gasoline leaks out, the evaporation of gasoline can be suppressed by instantly discharging a fire suppression over a wide area before ignition. We have developed a new concept fire suppression "Quick Splasher".



It is effective even with arson and intentional fires.



Measures against gasoline leak



Features

- Discharge immediately
- Over a wide area

2.5L agent discharge in 1.8 seconds.

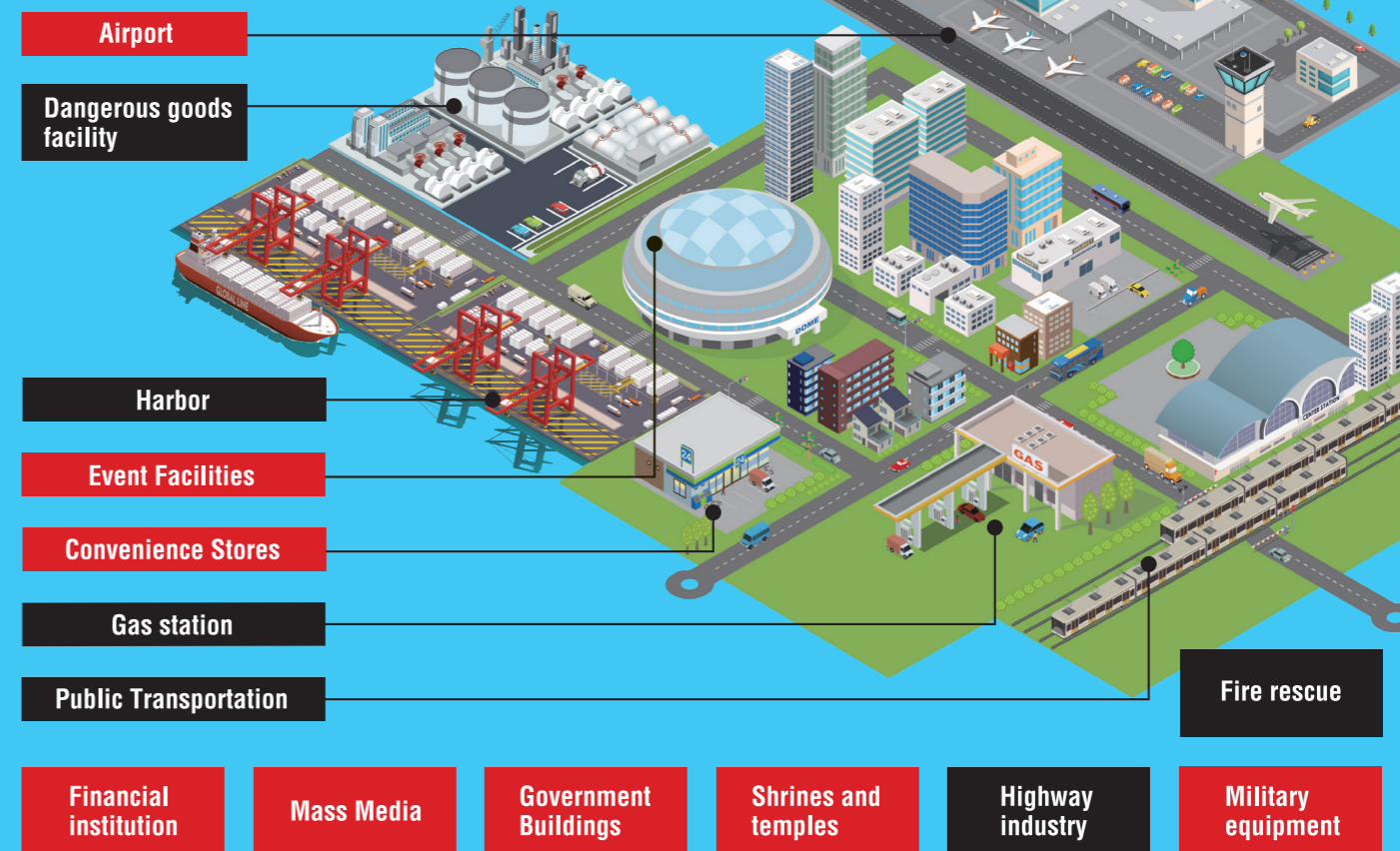
Maximum protected area is 10m². Prevent evaporation of gasoline.

Pull the locking pin and squeeze the lever.

Evacuate easily. Avoid being caught in fire.

Easy to carry. One Quick splasher weighs about 5Kgs.

Demonstrate a fire suppress function against accidental or unexpected oil leakage in various cases.



The way to use Quick Splasher



Oil leakage



Stick an ignition rod to the floor directly.



Explosion



Discharge Quick splasher



It will not ignite even if there is a fire.



Has good suppression effect.

It can be used even after ignition



Oil leakage



Discharge Quick splasher



Suppression of a fire